



Talpa Ridge Trail Discussion

July, 2020 | Enchanted Circle Trails Association





Talpa Ridge Conceptual Trails Plan

Developed by the
Enchanted Circle Trails Association
Nov. 2019





ECTA Project Goals

- Respond to stated Forest desire to enhance recreational trail opportunities, matched with EC Trail Plan priority areas
- Create an extended multi-user trail network to enhance diverse recreation experiences.
 - Formalize existing non-system trails to address maintenance concerns, i.e. Talpa Traverse, Carmelita
 - Develop additional parking / trailhead areas
 - Create thru-route and accommodate horse trailers.

Conceptual Trail Plan Development

- Consulted with user groups about desired future conditions
 - avoid trespassing on private land,
 - additional horse trailer parking,
 - more purpose built mountain bike trails
- Walked all proposed trails with GPS to determine construction feasibility.
- Assessed each trail route for recreation characteristics according to DOI/IMBA Guidelines for a Quality Trail Experience (GQTE)





Current Talpa Ridge Route Inventory



Field Data Collected

- Information gathered:
 - Route Type: Route, Trail, Primitive Road
 - Use Type: 4x4, ATV, UTV, etc.
 - Use Level: Light, Moderate, Heav
 - Impact Age: Current, Old, New
 - Impact: Minor / Major Vegetation Loss
- 255 geo-referenced photos collected



Existing user trail.



Existing Routes

- Total routes mapped: 38 mi
- Observed *Current Use*:
 - ATV: **18.7 mi**
 - Non-Motorized: **14.1 mi**
 - Non-Mechanized: **2.7 mi**
 - Impassible (logging): **1.5 mi**
 - Other: **0.8 mi**



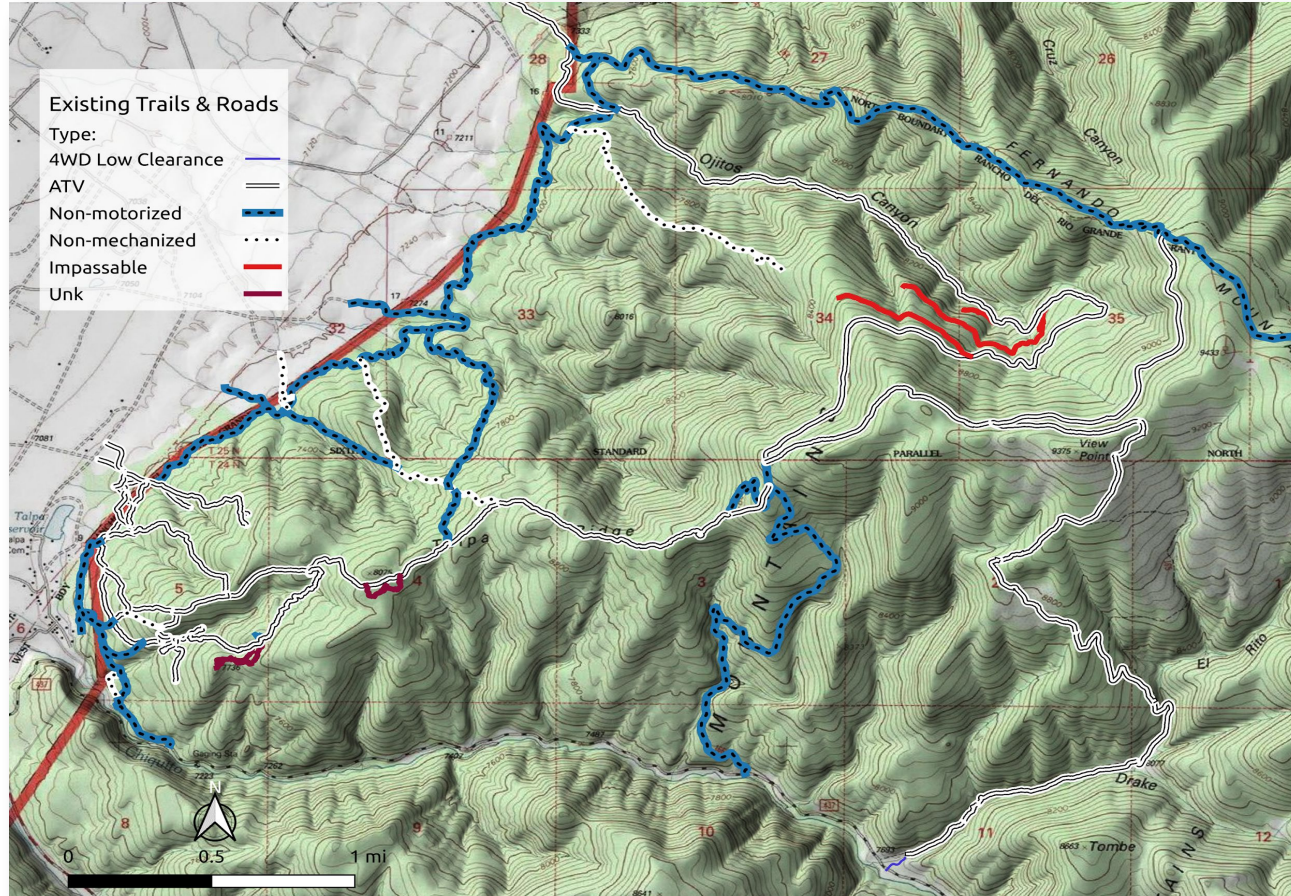
Talpa Traverse
Single-Track

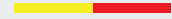


2-Track on
Talpa Ridge



Existing Routes – current use pattern



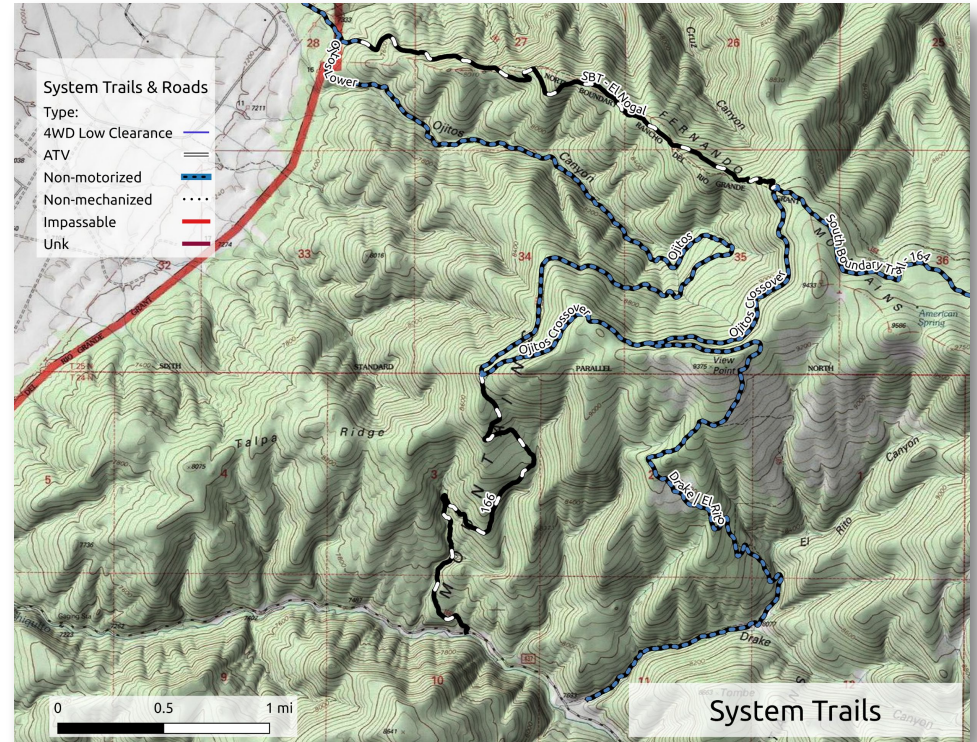


Evaluation of Existing Trails



System Trails summary

- ~16 miles (including El Nogal descent portion of SBT)
- System trails are on the steep side (El Nogal, Ojitos, and Divisadero).
- Limited parking at El Nogal TH both number of spots and capacity for horse trailers.
- No trailhead or legitimate parking at south end (Rio Chiquito)

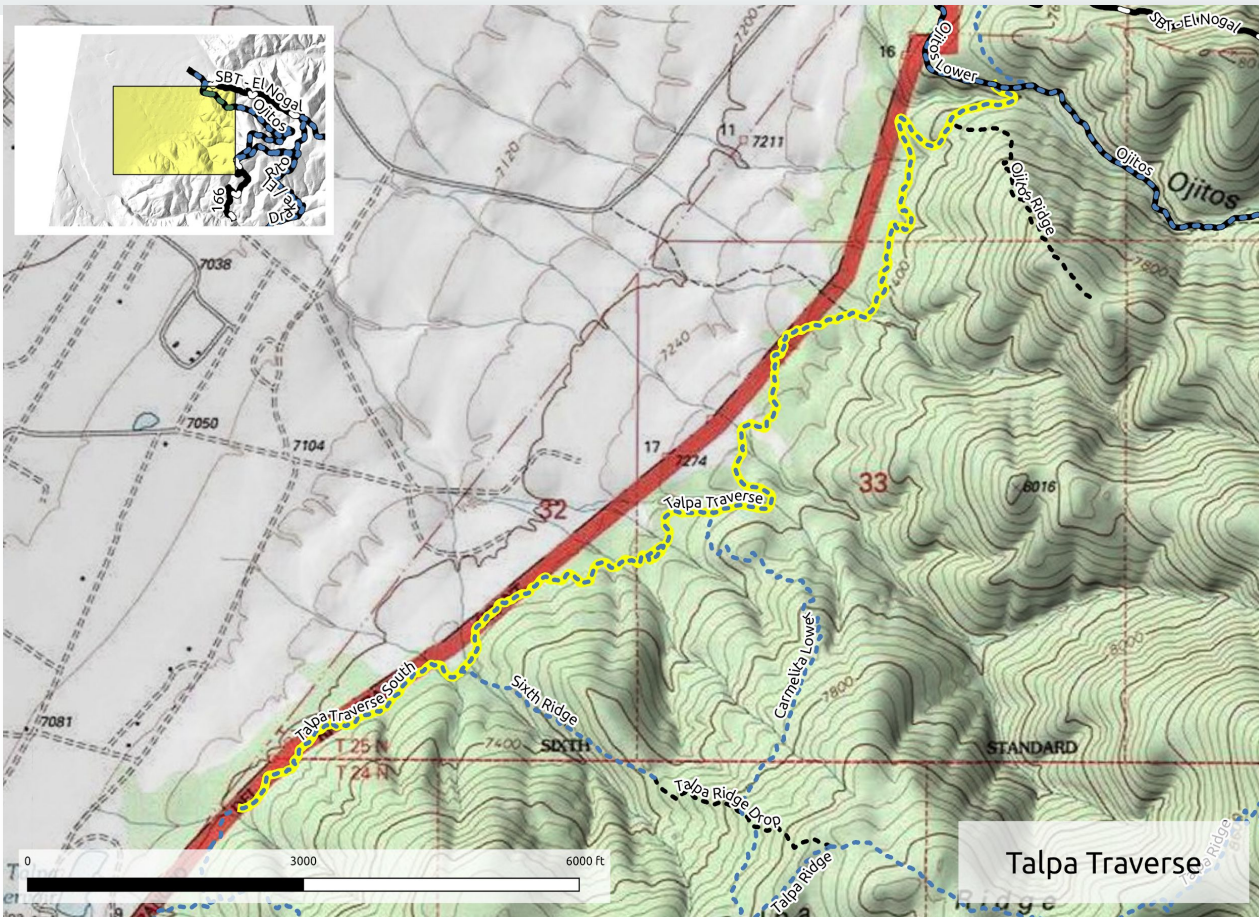


Social Trails

- Heavily used, despite non-official status.
- No signage (easy to get lost, encourages illegal access, no alerts to slow - blind corner, etc.)
- Tree growth creates poor sight lines (potential conflict)
- Bad design i.e. sections too steep leads to erosion
- Individual user-developed trails being added without consideration to overall need.

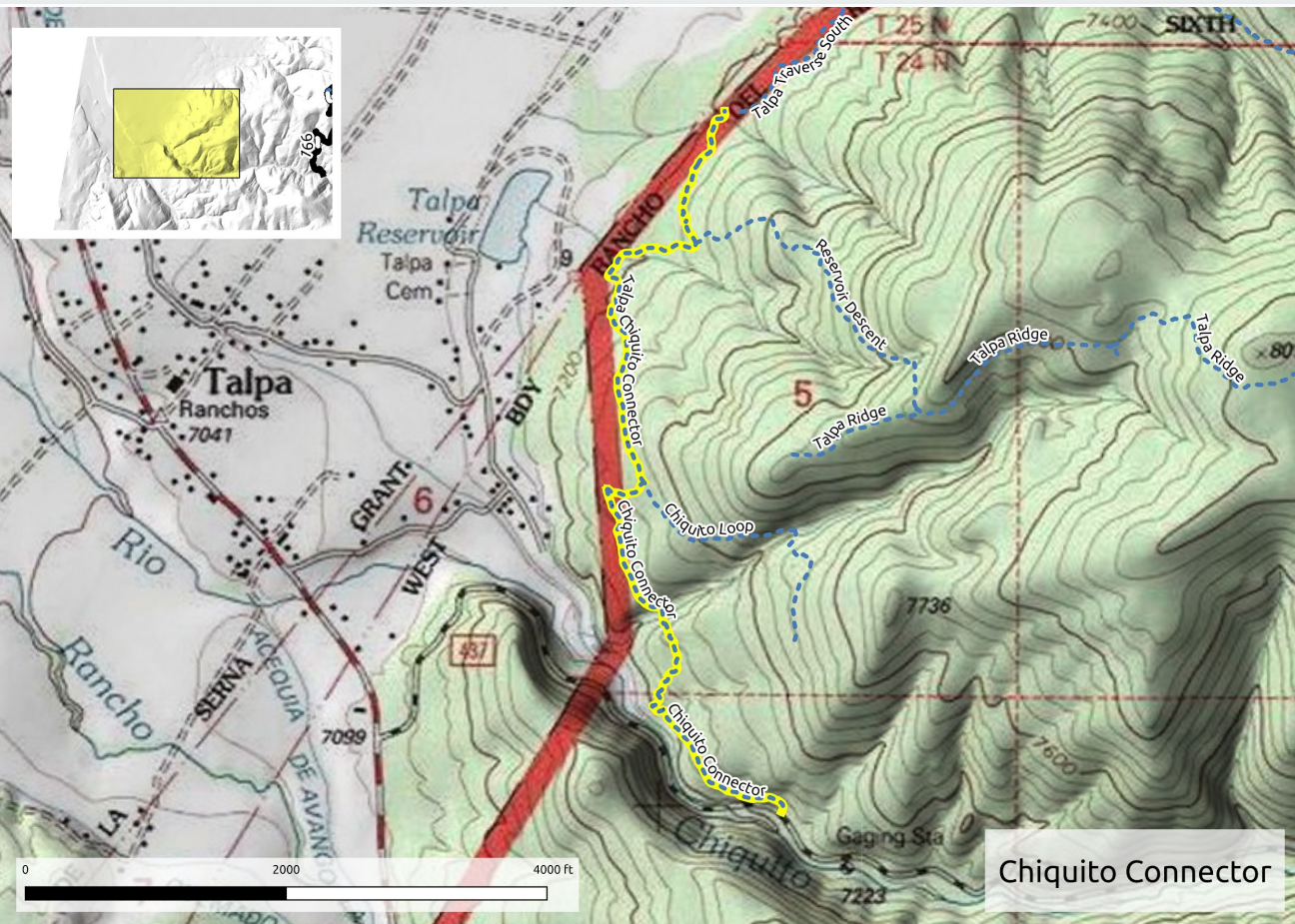


Talpa Traverse



- Distance: 3.14 mi from Ojitos to Morada Road
- Status
 - Heavily used by multiple user groups.
- Issues
 - Erosion.
 - Blind corners.
 - User trails.
- Proposed Actions
 - Formally adopt into CNF trail inventory as shared multi-use trail.
 - Connect to the south to FR 437 creating through-route and access to additional parking..
 - Strategic thinning to clear sight lines.
 - Minor re-routes / erosion control measures.
 - Trail signs / maps keep users on main corridor - avoid neighborhood access and mitigate conflicts.
 - ATV abatement measures.

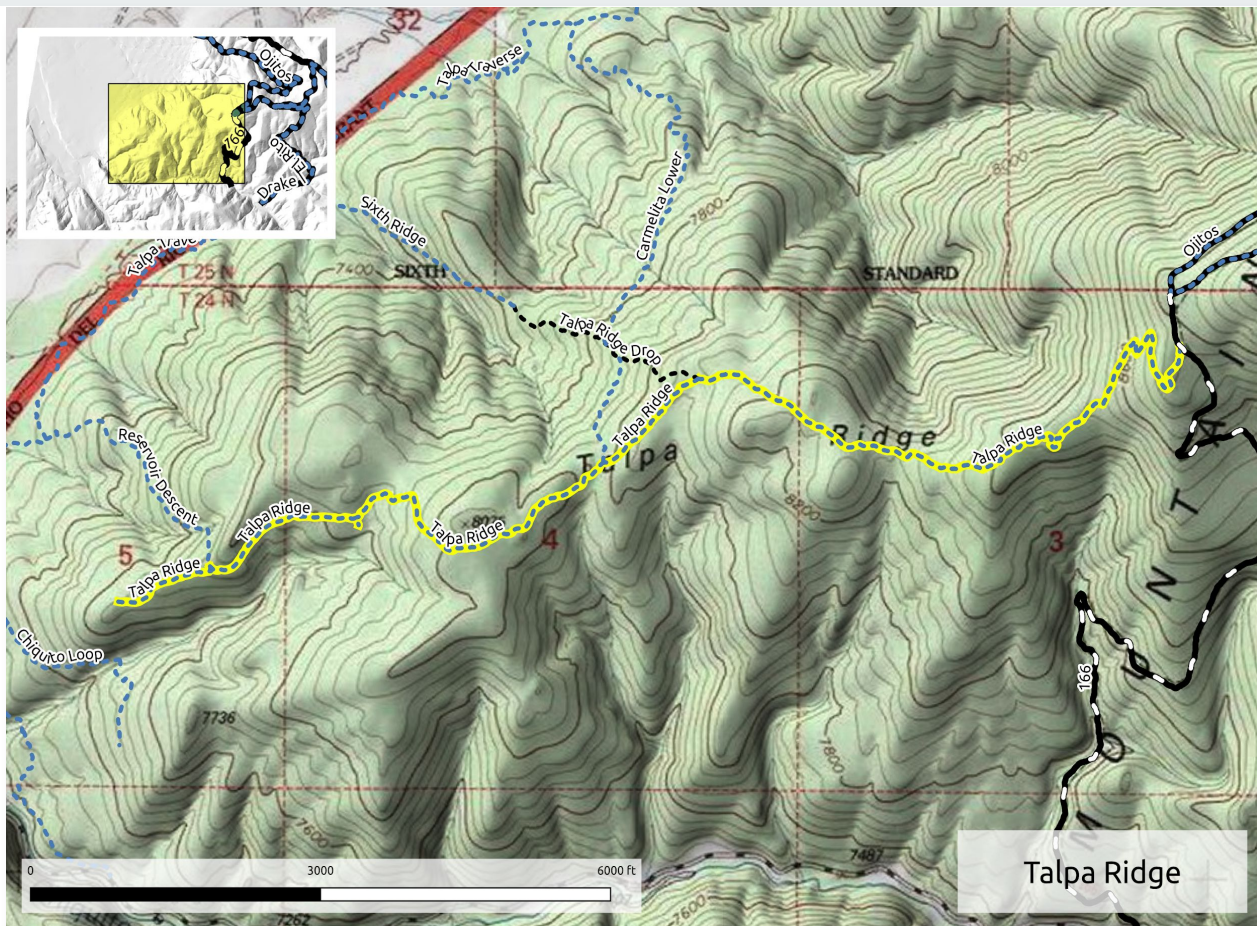




Lower Chiquito Connector

- Distance: 1.4 mi
- Status / Purpose:
 - Old road bed and user-created singletrack.
 - Connects Talpa with FR 437/ Rio Chiquito.
- Issues:
 - Main gully crossing extremely steep.
 - Sections of washed out trail.
- Proposed Action:
 - Formalize trail tread.
 - Reroute at gully crossing to top of drainage.
 - Trailhead signage.

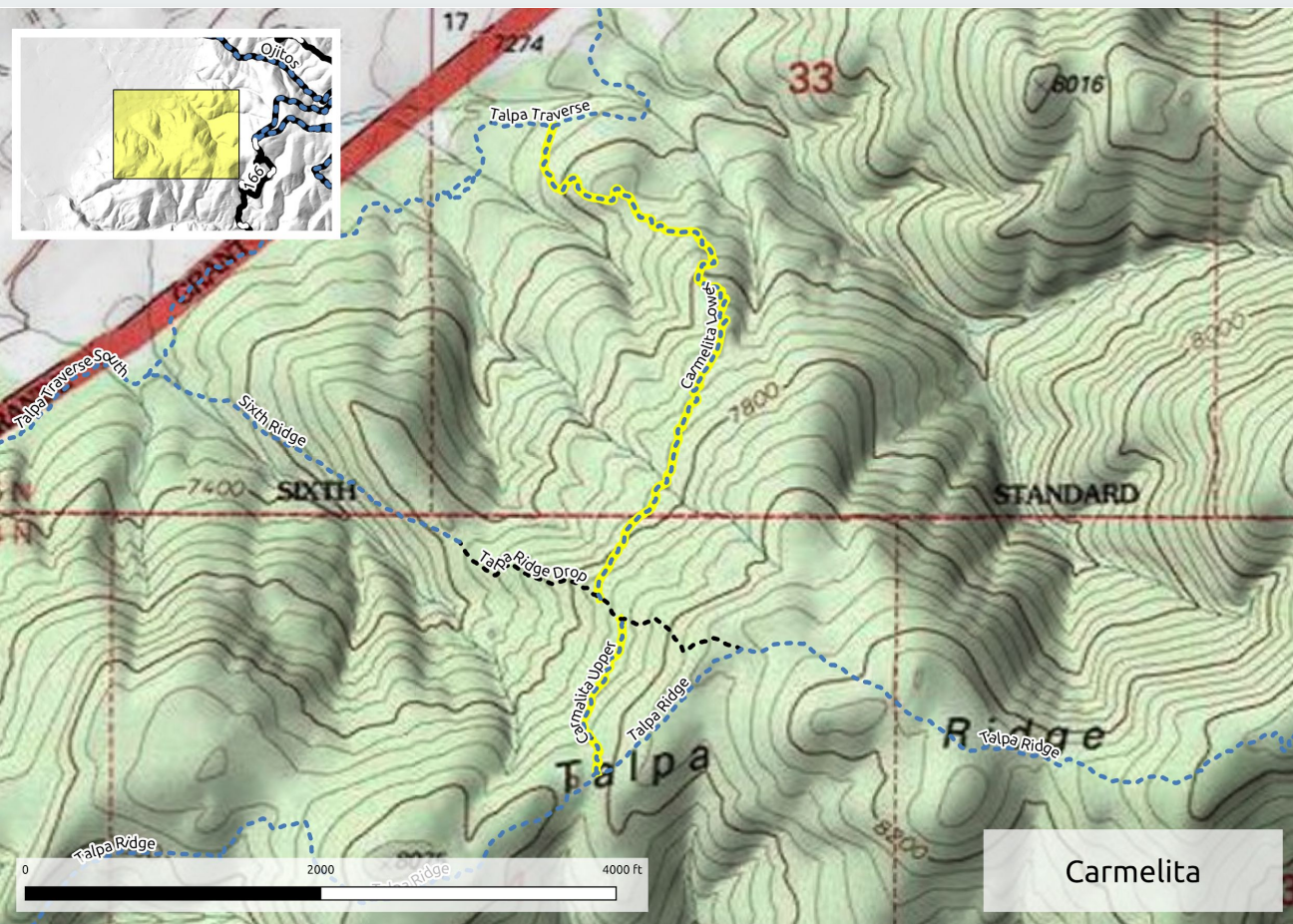




Talpa Ridge

- Distance: 2.9 mi from Ojitos Overlook
- Status / Propose
 - single-track and 2-track.
 - Connects Ojitos with Talpa T.
- Issues
 - Erosion
 - Sections steep, loose, rocky.
- Proposed Action
 - Formalize trail tread.
 - Re-routes / erosion control measures.
 - Create suitable connector trails.
 - Install signage to dissuade motorized use.



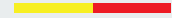


Carmelita

- Distance: 1.2 mi
- Status / Purpose
 - User-created single-track.
 - Connects Talpa Ridge with Talpa T.
- Issues
 - Sections steep and tight.
 - Narrow travel corridor.
- Proposed Action
 - Formalize trail tread.
 - Widen corridor.
 - Reroutes to make corners more accessible to bicycles and horses (e.g. climbing turns)



Draft Conceptual Plan Existing Trails



DRAFT Proposed New Trails

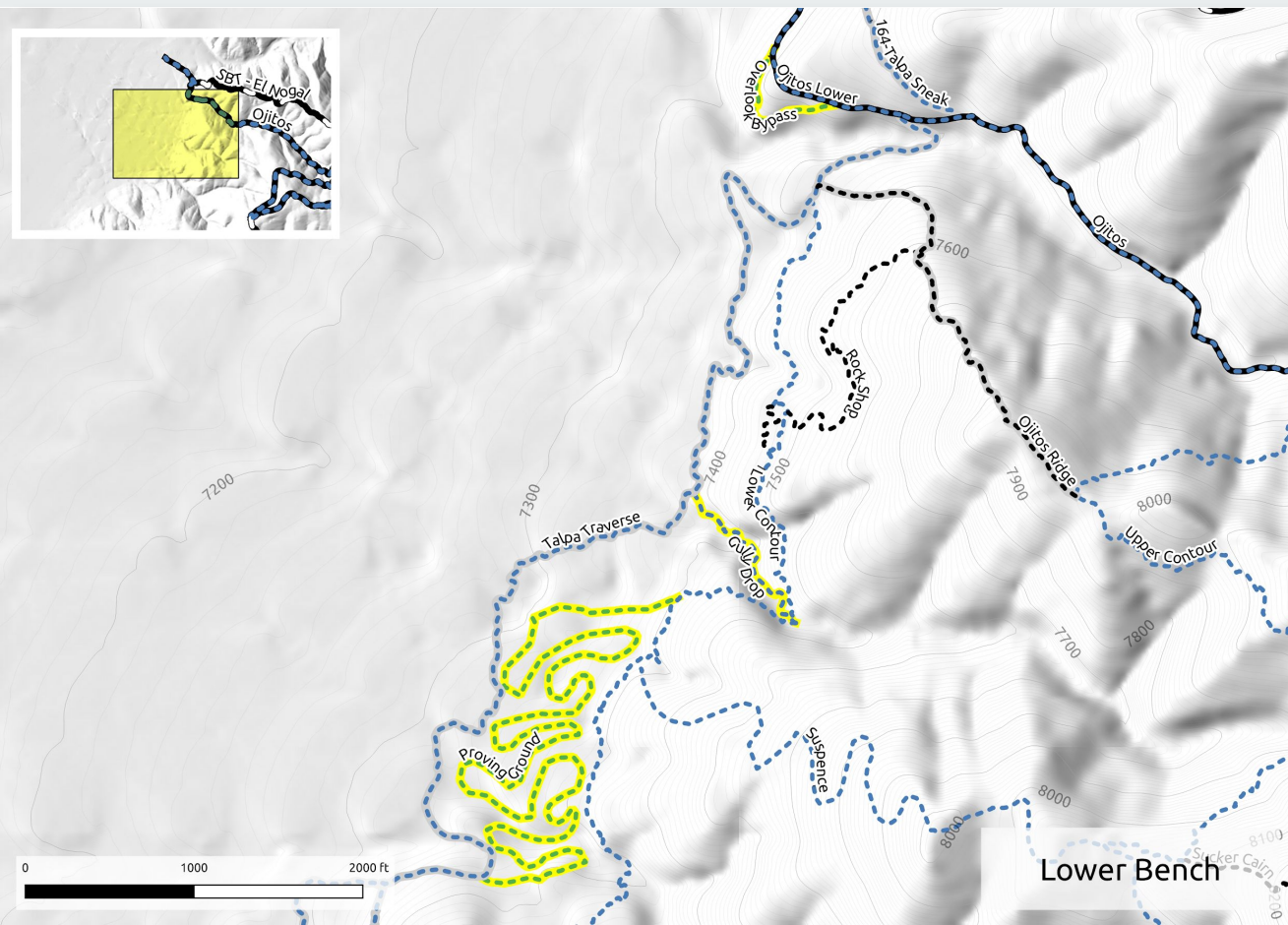
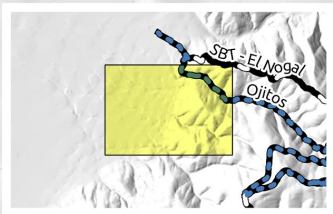




Proposed New Trail Characteristics

- Accessible and shared by all user groups.
 - Multi-use contour or cross-country trails.
 - Multi-level traverses with bisects makes for a "stacked loop" system.
 - Alternative technical "B-lines" provide variety and create perception of more extensive trail network.
 - Limited number of "directional" downhill trails specific to mountain bikes.
 - Trails designed and built in accordance with Federally approved **Guidelines for Quality Trail Experience (GQTE)**
- Construction Methods
 - Mostly hand-benching.
 - Machine-benching of corridor trails may be desirable in some areas.
 - Rockwork in technical sections will require mix of hand construction with machine assistance in some areas.





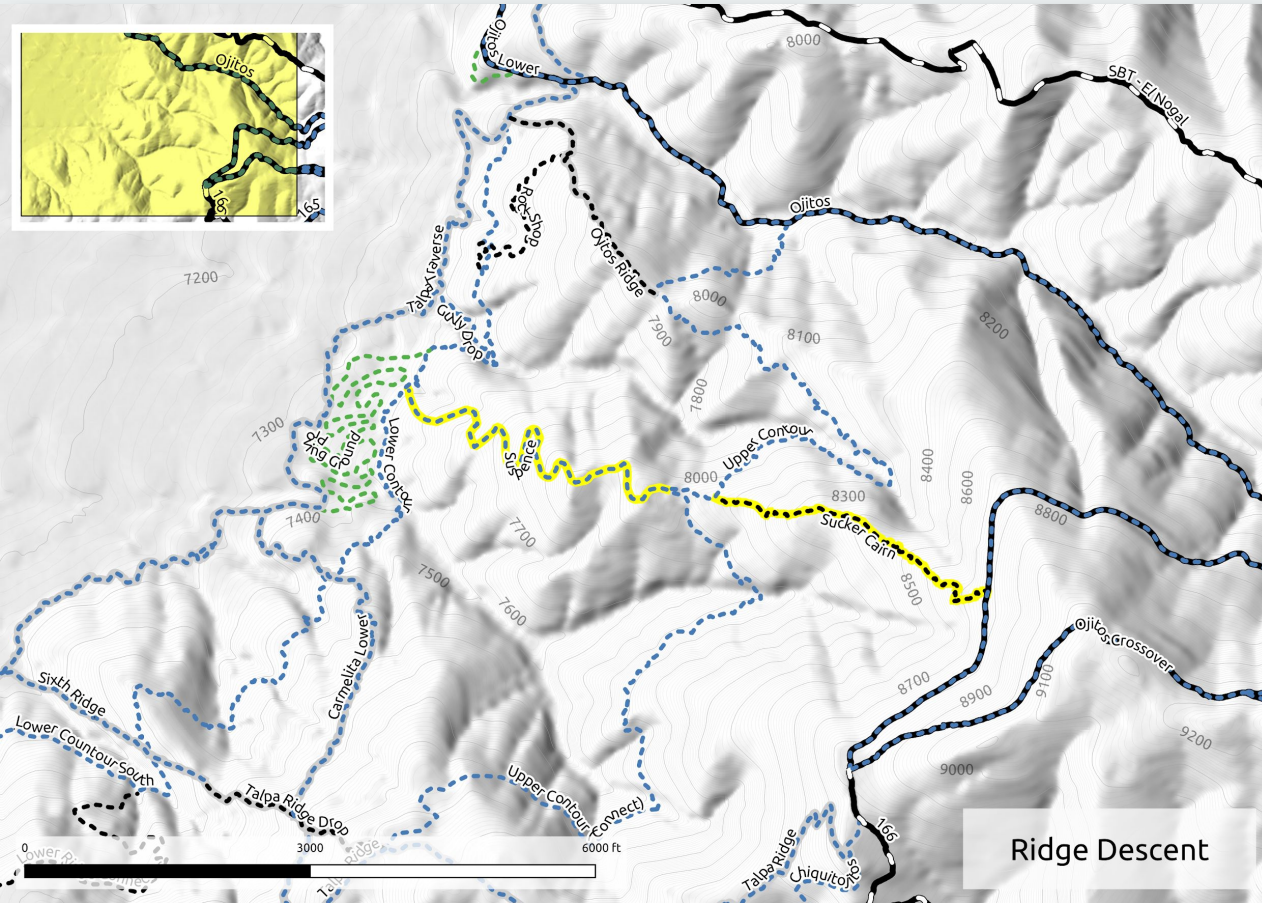
Lower Bench

- Relief trails to take pressure off main corridors.
- Focused on "Play" and "Exercise" rather than "Efficiency" (getting from A-to-B)
- Current distance: 2.2 mi.



Descent Trails

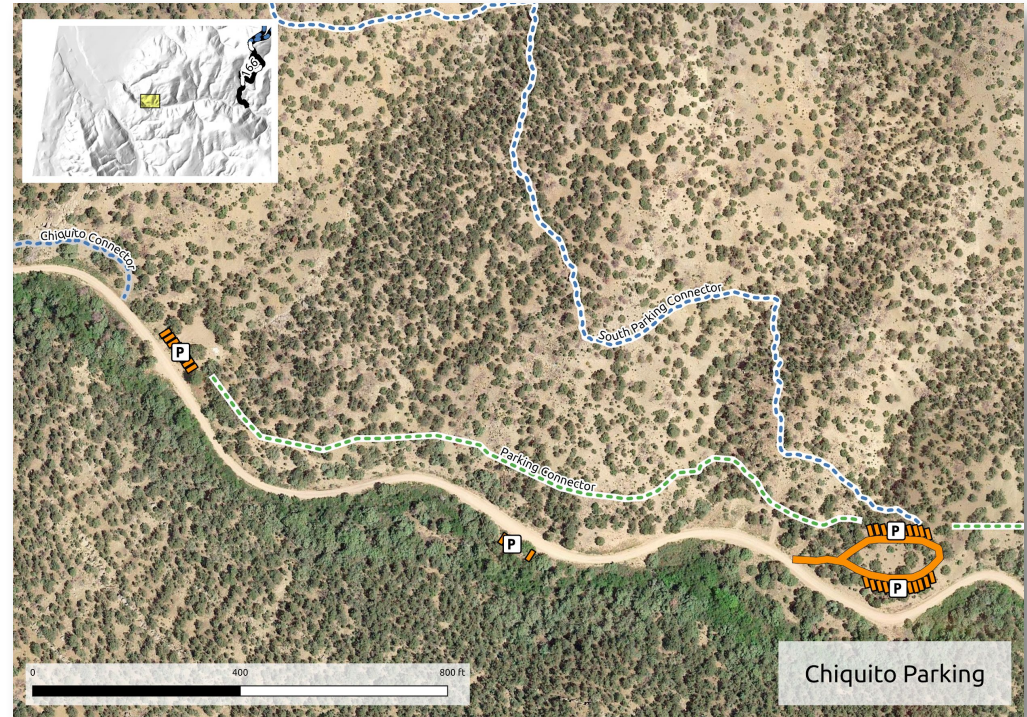
- Possibly directional (downhill).
- Provides more challenging ascents / descents.
- Link contour trails.
- Current distance: **1.7 mi.**

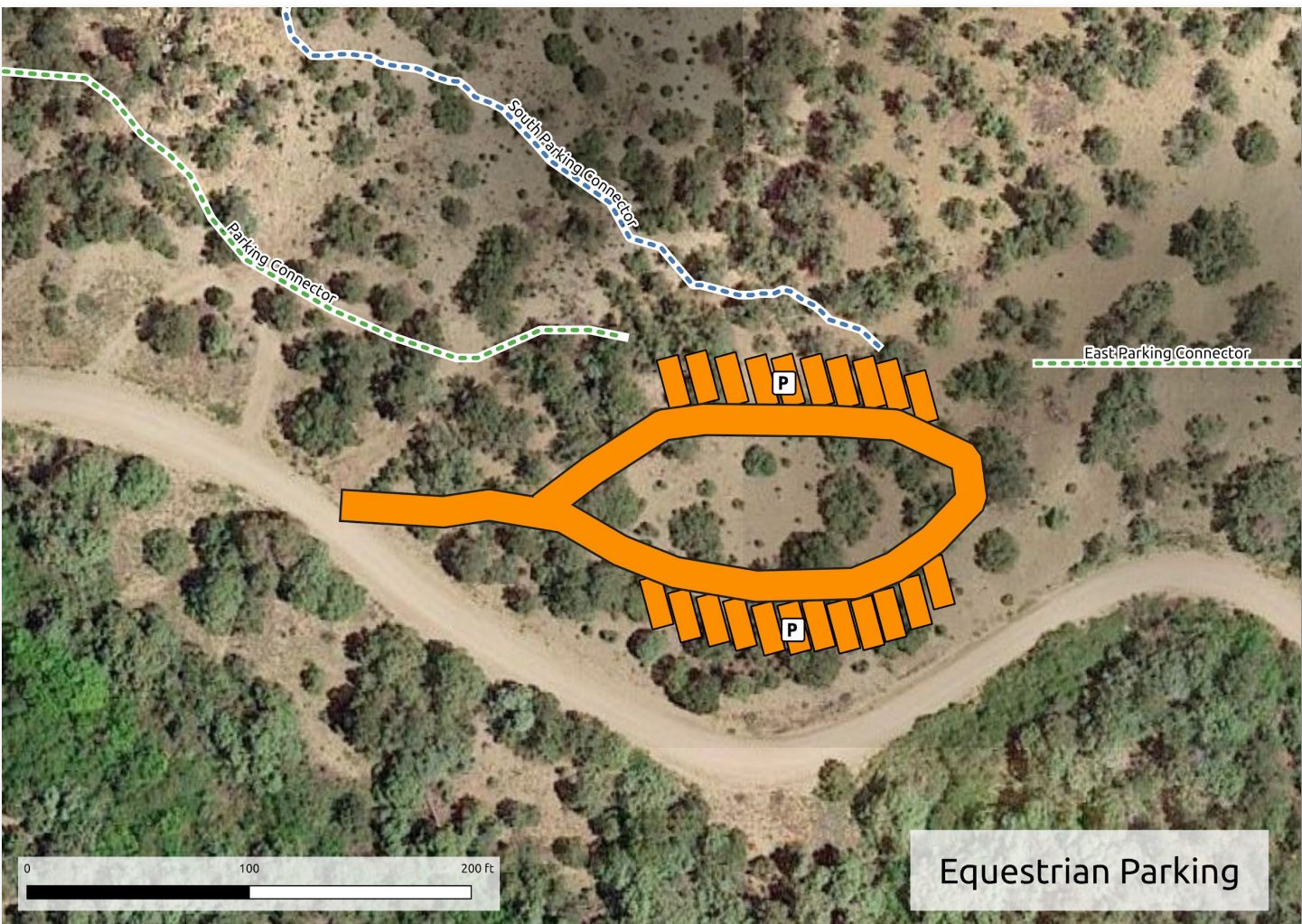




Chiquito Parking

- First access vehicle parking
 - 8 car spaces.
 - 0.9 miles from NM 518.
- Horse Trailer Parking
 - 22 car spaces or multiple trailer parking with turnaround.
 - 1.2 miles from NM 518.
- Additional 4 car parking between.

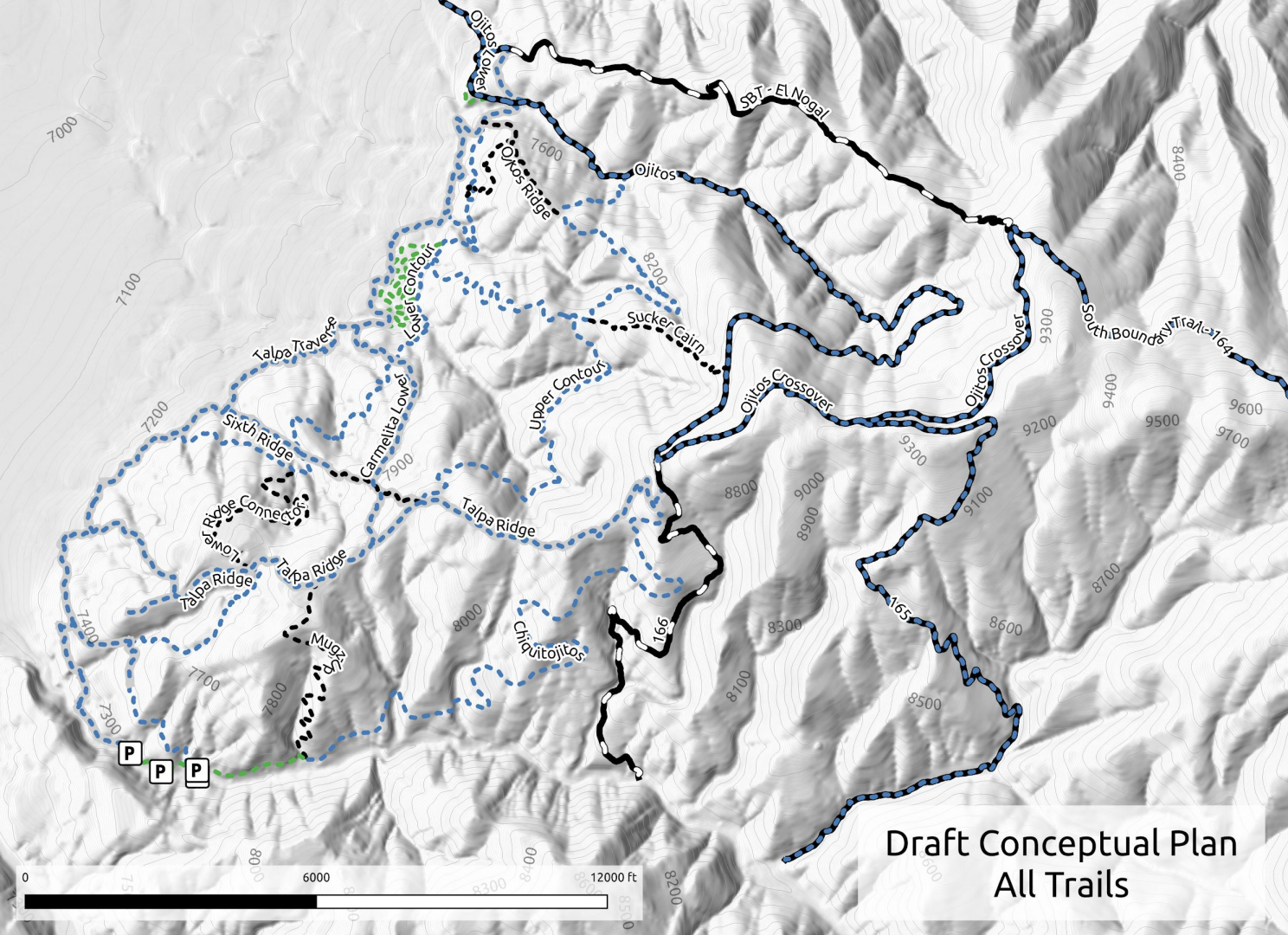




Equestrian Parking



All Current and Proposed Talpa Ridge Trails



Draft Conceptual Plan
All Trails





Thank you

Enchanted Circle Trails Association

<http://enchantedcircletrails.org>

enchantedcircletrails@gmail.com

Questions?

GIS data / map development:

- Loren Bell

Project Director:

- Carl Colonius

